

## ENGINEERING MANDATORY DISCLOSURE

Mandatory disclosure by Institutions running AICTE approved Engineering / Technology programmes to be included in their respective Information Brochure, displayed on their website and to be submitted to AICTE every year latest by 30th April together with its URL .The following information is to be given in the Information Brochure besides being hosted on the Institution's official Website.

*"The information has been provided by the concerned institution and the onus of authenticity lies with the institution and not on AICTE".*

### I. NAME OF THE INSTITUTION

|                      |  |                                    |
|----------------------|--|------------------------------------|
| Name                 | Annai Mathammal Sheela Engineering College |                                    |
| Address              | Permanent Location as approved by AICTE    | Temporary Location (if             |
|                      | Erumapatty, Namakkal Tamil                 | N.A.                               |
| Phone Number         | 04286 – 252263                             | E-Mail : principal@amsheela.org.in |
| Fax                  | 04286 – 252256                             |                                    |
| Web Site             | www.amsheela.org.in                        |                                    |
| Nearest Rly. Station | Namakkal                                   | Distance : 14 Kms                  |
| Nearest Airport      | Trichy                                     | Distance : 65 Kms                  |

### II. NAME & ADDRESS OF THE PRINCIPAL

|             |                             |                               |                          |                        |                  |
|-------------|-----------------------------|-------------------------------|--------------------------|------------------------|------------------|
| Name        | Dr. T. Parithimar Kalaignan |                               |                          |                        |                  |
| Designation | Principal                   | Qualification<br>& Experience | Highest Degree           | Specialization         | Total Experience |
|             |                             |                               | Ph.D.                    | Electrical Engineering | 17 Years         |
| Phone. No.  | 04286 – 252263              |                               | Fax No.                  | 04286 – 252256         |                  |
| E-Mail      | principal@amsheela.org.in   |                               | Mobile No. : 94437 11881 |                        |                  |

### III. NAME OF THE AFFILIATING UNIVERSITY

|          |                          |                       |                  |
|----------|--------------------------|-----------------------|------------------|
| Name     | Anna University, Chennai |                       |                  |
| Address  | Guindy, Chennai          |                       |                  |
| Pin Code | 600 025                  | Period of Affiliation | 2019 - 2020      |
| STD Code | 044                      | Phone No.             | 044- 22332161    |
| Fax      | 22351956                 | E-Mail / Web Site     | www.annauniv.edu |

### IV. GOVERNANCE

#### Governing Boards:

For an effective and smooth functioning of all activities concerning academic, finance, infrastructure development etc., the college has a Governing Body, Governing Council and an Academic Advisory Body.

#### Governing Body:

The members of the Governing Body are the members of the Trust/Society.

Tmt. P.Swarnalatha Mani, Chairperson

Tmt. P. Kalareena Ilango, Member

Tmt . P.Malaleena Arangannal, Member

Principal, Ex-officio Member

The Governing Body meets once in four months and reviews all academic, and other developmental activities.

### Governing Council

The Governing Council is constituted as per the norms prescribed by AICTE.

The members of the Governing Council are as follows:-

| Sl. No. | Name                         | Position          | Educational Qualification | Present Designation /Occupation | Telephone numbers | E-mail   | Residential Address  |
|---------|------------------------------|-------------------|---------------------------|---------------------------------|-------------------|--|--|
| 1       | Mrs.P.Swarna Latha           | Chairperson       | B.Com                     | Managing Trustee                | 9443655000        | <a href="mailto:info@amsheela.org.in">info@amsheela.org.in</a>           | No.-9, Madam Lane, South Car Street, Tharamangalam(PO), Omalur(TK), Salem(DT). 433-1ThirunagarExtension, State Bank Colony II, Meyyanur, Salem - 636004<br>No.1, Vallalar Street, Rasipuram (PO), Namakkal(DT).<br>No.-9, Madam Lane, South Car Street, Tharamangalam(PO), Omalur(TK), Salem(DT). 433-1ThirunagarExtension, State Bank Colony II, Meyyanur, Salem - 636004<br>No.1, Vallalar Street, Rasipuram (PO), Namakkal(DT). |
| 2       | Mrs.P.Kala Reena             | Trustee           | -                         | Trustee                         | 9443711883        | <a href="mailto:info@amsheela.org.in">info@amsheela.org.in</a>           |  |
| 3       | Mrs. P.Mala Leena            | Trustee           | B.Com                     | Trustee                         | 9443132000        | <a href="mailto:info@amsheela.org.in">info@amsheela.org.in</a>           |  |
| 4       | Mr.M.Mani                    | Member            | B.Sc.                     | Director                        | 9443711883        | <a href="mailto:info@amsheela.org.in">info@amsheela.org.in</a>           |  |
| 5       | Mr.J.Elango                  | Member            | B.A., B.L.,               | Director                        | 9443256789        | <a href="mailto:info@amsheela.org.in">info@amsheela.org.in</a>           |  |
| 6       | Dr.T.Arangannal              | Member            | M.B.A.                    | Director                        | 9443555000        | <a href="mailto:info@amsheela.org.in">info@amsheela.org.in</a>           |  |
| 7       | Dr. J.Prakash                | UniversityNominee | M.E., Ph.D                | Professor                       | 044 - 22516320    | prakaiit@gmail.com   |  |
| 8       | AICTE Nominee                | Member            | TO BE NOMINATED           |                                 |                   |  |  |
| 9       | DOTe Nominee                 | Member            |                           |                                 |                   |  |  |
| 10      | Mr.M.Mazkure Aalam           | Member            | B.E., M.B.A.              | Managing Director               | 7200082468        | <a href="mailto:info@mtis.co.in">info@mtis.co.in</a>                     | 140B, VenkataswamyRoad, NewSidhapudur, Coimbatore.   |
| 11      | Dr. T. Parithimar Kalaiganan | MemberSecretary   | Ph.D.                     | Principal                       | 9443711881        | <a href="mailto:principal@amsheela.org.in">principal@amsheela.org.in</a> | 10 - B, Vasanthapuram, Near RI Office, Erumapatty, Namakkal– 637013.   |

The Governing Council meets twice in a year and reviews various activities of the college and suggests measures to achieve excellence in academic, Research & Development and improvements in infrastructural facilities.

Academic Advisory Body:

The academic advisory body of the college is constituted with the following members:

1. The Principal
2. Heads of all the Departments
3. Senior Faculty from all Departments.

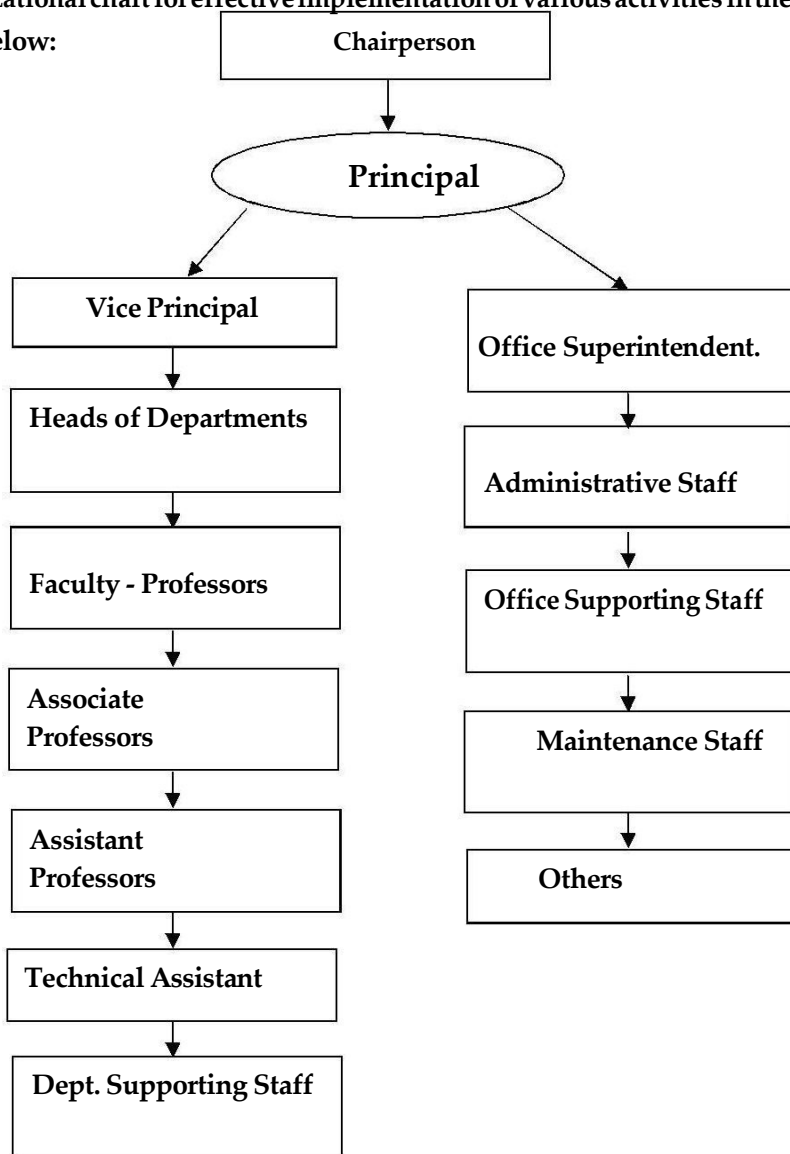
❖ Frequency of the Board Meetings and Academic advisory body

The academic advisory body meets once in a month and reviews the following academic matters:

1. Coverage of Syllabus
2. Content required beyond the syllabus
3. Performance of students in internal tests and University examination
4. Attendance and discipline of students
5. Scheduling of industrial visits and training
6. Career development programme

## ORGANIZATIONAL CHART AND PROCESSES:

The organizational chart for effective implementation of various activities in the college is depicted below:



Under the guidance of Chairperson, the Directors issue necessary guidelines to the Principal.

The Principal in consultation with the management, makes plans, organizes, controls and executes the task.

#### General Administration:

The Principal looks after the administration of office and correspond with to AICTE, AU and other agencies in consultation with the Management and co- ordinates in all activities of departments and office.

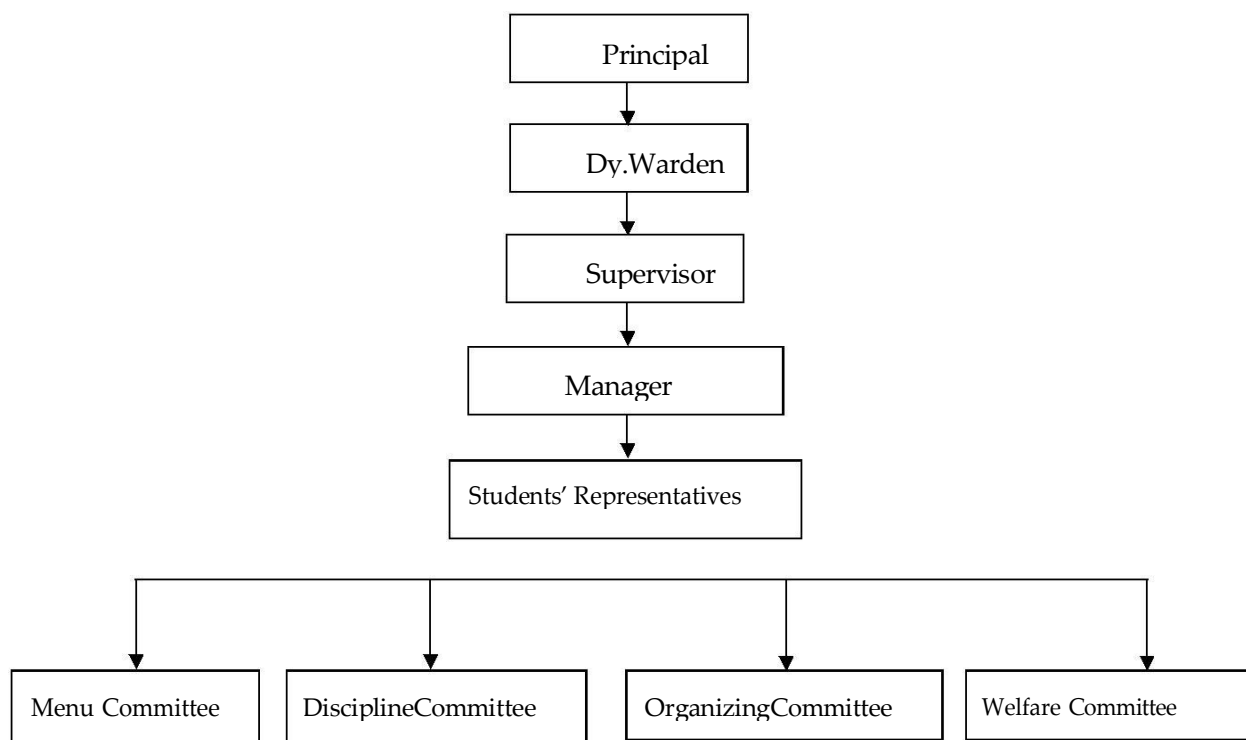
Office Superintendent renders necessary assistance to the Principal in the day- to - day affairs.

Administrative staff carry out the task assigned to them and maintain records.

Supporting staff assist all officials.

Maintenance staff attend the day-to-day work assigned to them and maintain cleanliness.

#### Hostel Administration:



Under the guidance of the Principal, the Dy.Wardens provide accommodation to the students as per the rules prescribed. They maintain attendance of the students, render necessary assistance to them and help in maintaining discipline.

The supervisor oversees the cleanliness of the hostel campus. The Manager makes arrangement to provide quality food on time to the students. The Supervisors and the Manager co-ordinate with all other functionaries in the hostel.

The Dy.Wardens and the Supervisor brief the Principal periodically on all matters of importance.

The students' representative of various committees discuss with the Dy. Wardens and Principal on all issues concerning them in the hostel.

Processes involved in maintaining high academic standards are detailed below.

**Academic - Teaching-Learning Process:**

Heads of Departments in association with the faculty

- Prepare the Academic Plan for a Semester.
- Identify Theory & Practical subjects pertaining to the parent department and inter-departments.
- Allocate subjects based on qualification, specialization, experience and previous results.
- The faculty prepares Time-Table with reference to the Curriculum.
- Prepare Lesson Plan effectively, well ahead of the commencement of a semester.
- Handle lecture classes as per the time-table.
- Conduct Internal Tests & Model Examination.
- Evaluate the answer books and notify the marks.
- Identify weak students and conduct special coaching classes.
- Verify observation and Record Note Books.
- Counsel the students and conduct re-test for those failed/performed poorly.
- Inform the parents about the performance of their wards.
- Conduct seminars
- Motivate students to do Innovative Project

**Nature and extent of involvement of faculty and students in academic affairs and improvements:**

- The Members of faculty in all departments are well qualified, experienced and dedicated towards the goal.
- They discharge the duties with utmost sincerity and involve themselves in the curricular co-curricular activities in the best interest of the student.
- Incentives and awards are instituted for achieving academic excellence by faculty and students.
- Faculty members are deputed regularly for FDP, STTP, Summer/Winter Schools, Workshop and Conferences.
- In addition to the normal learning process, students get exposure to the practical world through industrial visits, guest lecturers etc.
- Current concepts and practices are introduced to students by way of value added courses.
- Professional communication courses are conducted regularly to improve communication skills.
- The college also conducts Business English Course in collaboration with British Council.
- Regular courses on improving aptitude skills are conducted by experienced faculty.
- For a group of 15-20 students, a faculty is allotted as their counselor. Students are advised and assisted in solving their problems on both academic and non- academic. Counselor follows up the progress of the students, maintains students profile and guides them to make improvements in their performance.



### Curricular activities:

- Prepare detailed lesson plan and handle classes
- Suggest various reference books
- Conduct periodic tests and closely monitor the student's performance
- Send progress reports to the parents
- Identify weak students and give them special coaching
- Arrange industrial visits
- Counsel the students as and when required
- Conduct career guidance/career development programmes
- Conduct value added courses
- Arrange guest lecturers for teaching the contents beyond syllabus

### Co-curricular activities:

- Encourage the students to participate in various National Level Competitions
- Assist them in the preparation and presentation of Research Papers
- Guide them in the National Level Symposiums organized
- Motivate them to participate in social activities-NSS, YRC, Blood Donation Camps etc.
- Encourage them in sports & games

### Mechanism/Norms & Procedures for democratic/good governance:

- Academic calendar for the college and departments are prepared well in advance.
- Rules and regulations of the college are framed and informed to all concerned.
- Regulations of the University are informed to all students, faculty and staff.
- Policy decisions related to all academic matters are taken collectively by the Academic Advisory Committee. Minutes of meetings are prepared and circulated to the members and the faculty. All decisions are communicated through Circulars to the faculty and through Notices to the students.
- Meetings of faculty are convened at regular intervals and the policy decisions related to academic matters and others informed.
- Counsellor system is adopted to take special care on each student.
  - Every class has a class advisor in charge for attendance who will monitor the participation of students in regular classes and other

programmes.

- Internal Test Mark and attendance are sent to the parents periodically.
- Weak students are identified and suitable action to improve their performance is taken periodically.
- Misbehaved students are identified and counseled.
- After the announcement of semester results coaching classes are conducted for the failed students.

**Students' feedback on institutional governance/faculty performance:**

- Class Committee (consisting of students and the faculty handling the classes) Meetings are conducted thrice in a semester and feedback is obtained from students directly. Suggestions from students are listened to.
- Feedback from students into faculty subject-wise. Strengths and weaknesses of faculty are identified and accordingly faculties are rewarded/counseled to improve upon.
- Feedback is also obtained from students about institutional governance and suggestions are accepted and implemented.

**Grievance redressal mechanism for faculty, staff and students:**

- A Grievance Redressal Committee comprising of senior faculty, students and staff is constituted every year.
- The committee is headed by the Head of a department. It receives grievance from faculty, staff and students and take remedial actions.
- On complaints, it conducts inquiry considering all aspects and submits its findings and recommendations. Remedial measures are taken accordingly.
- Suggestion boxes are placed at strategic points and acted upon promptly.

## V. PROGRAMMES

### ➤ Name of the Programmes approved by the AICTE

| Sl.No. | Under Graduate Programmes                      |
|--------|--|
| 1.     | BE – Computer Science and Engineering          |
| 2.     | BE - Mechanical Engineering                    |
| 3.     | BE - Electronics and Communication Engineering |
| 4.     | BE - Medical Electronics                       |
| 5.     | BE - Industrial Engineering                    |
|        | Post Graduate Programmes                       |
| 6.     | MBA  |
| 7.     | MCA  |
| 8.     | ME - Power Electronics & Drives                |
| 9.     | ME - Applied Electronics                       |
| 10.    | ME - Computer Science and Engineering          |
| 11.    | ME - Embedded System Technology                |
| 12.    | ME - CAD/CAM                                   |
| 13.    | ME - Industrial Safety & Engineering           |
| 14.    | ME - Structural Engineering                    |

**Sanctioned intake, duration, fee and cut-off marks for each programme.**

| S.No. | Course Name                                      | No. of Seats | Duration / Years | Cut off Marks      | Fees Rs./Annum | Placement Facilities |
|-------|--|--------------|------------------|--------------------|----------------|----------------------|
| 1     | B.E - Computer Science And Engineering           | 60           | 4                | As per Govt. Norms | 50,000         | Available            |
| 2     | B.E - Electronics And Communications Engineering | 60           | 4                |                    | 50,000         | Available            |
| 3     | B.E - Mechanical Engineering                     | 60           | 4                |                    | 50,000         | Available            |
| 4     | B.E - Medical Electronics                        | 60           | 4                |                    | 50,000         | Available            |
| 5     | B.E - Industrial Engineering                     | 60           | 4                |                    | 50,000         | Available            |
| 6     | MCA- Computer Applications                       | 23           | 3                |                    | 30,000         | Available            |
| 7     | MBA- Business Administration                     | 45           | 2                |                    | 30,000         | Available            |
| 8     | M.E - Computer Science And Engineering           | 18           | 2                |                    | 50,000         | Available            |
| 9     | M.E - Power Electronics And Drives               | 13           | 2                |                    | 50,000         | Available            |
| 10    | M.E - Applied Electronics                        | 13           | 2                |                    | 50,000         | Available            |
| 11    | M.E - Embedded System Technologies               | 13           | 2                |                    | 50,000         | Available            |
| 12    | M.E - CAD CAM                                    | 13           | 2                |                    | 50,000         | Available            |
| 13    | M.E - Industrial Safety & Engineering            | 13           | 2                |                    | 50,000         | Available            |
| 14    | M.E - Structural Engineering                     | 18           | 2                |                    | 50,000         | Available            |

**Campus placement in last three years with minimum salary, maximum salary and average salary**

| Sl.No                                    | Year      | No.of Students Placed | Maximum Salary | Minimum Salary | Average Salary |
|--|-----------|-----------------------|----------------|----------------|----------------|
| 1.                                       | 2016-2017 | 174                   | 3,36,000       | 96,000         | 2,16,000       |
| 2.                                       | 2017-2018 | 204                   | 3,50,000       | 96,000         | 2,23,000       |
| 3.                                       | 2018-2019 | 62                    | 2,49,600       | 1,32,00        | 2,13,000       |
| <b>Total No. of Students Placed: 440</b> |           |                       |                |                |                |

**Placement Facilities:**

A placement cell with a full time placement officer, supporting staff and other infrastructure such as conference hall, GD rooms, and personal interview rooms with a full fledged office is functioning in the campus. Facilities are also available for conducting on-line aptitude test and technical tests.

**The placement cell focuses on:**

- i). Conducting career guidance for students.
- ii). Maintains constant liaison with industries for in-plant training, industry visits and campus placement.
- iii). Conducting career development programmes, aptitudes tests, technical tests mock interviews, group discussion, communication skills etc., regularly.

- Name and duration of programme(s) having affiliation/collaboration with Foreign University(s)/Institution(s) and being run in the same Campus along with status of their AICTE approval. If there is foreign collaboration, give the following details:

- Nil -

- Details of the Foreign Institution/University: Not Applicable
- Whether the Collaborative Programme is approved by AICTE? If not whether the Domestic/Foreign Institution has applied to AICTE for approval as required under notification no. 37-3/Legal/2005 dated 16<sup>th</sup> May, 2005

**Not Applicable**

**VI. FACULTY**

**Permanent Faculty : 95**

**Visiting Faculty : -**

**Adjunct Faculty : -**

**Guest Faculty : -**

**Permanent Faculty - Student Ratio : UG: 1 : 20**

**PG: 1 : 12**

**VII. PROFILE OF PRINCIPAL WITH QUALIFICATIONS, TOTAL EXPERIENCE, AGE AND DURATION OF EMPLOYMENT AT THE INSTITUTE CONCERNED**

| Name                         | Qualification     | Total Experience (Yrs) | Age (Yrs) | Date of Joining |
|------------------------------|-------------------|------------------------|-----------|-----------------|
| Dr. T. Parithimar Kalaiganan | B.E., M.E., Ph.D. | 17                     | 43        | 29.06.2016      |

**FACULTY-PROFILE**

1. Name : Dr. T. Parithimar Kalaiganan

2. Date of Birth : 30.12.1976

3. Educational Qualification:



| S.No | Degree | University           | Year of | Institution/College with address   | Subjects                               | Class            |
|------|--------|----------------------|---------|------------------------------------|--|------------------|
| 01   | BE     | University of Madras | 1998    | Dr MGR Engineering College Chennai | Electrical and Electronics Engineering | First            |
| 02   | ME     | Anna University      | 2004    | College of Engineering Guindy      | Power Electronics And Drives           | First            |
| 03   | Ph.D   | Anna University      | 2015    | Anna University                    | Electrical Engineering                 | Highly Commended |

4. Work Experience :

a. Teaching:

| University/ College  | Designation         | Period                   | Years and             |
|--|---------------------|--------------------------|-----------------------|
| Dr MGR Engineering College                                   | Lecturer            | 15-04-2000 to 31-05-2002 | 2 years and 1 months  |
| Pavendar Bharathidasan College of Engineering and technology | Associate Professor | 21-06-2004 to 17-02-2016 | 11 years and 7 months |
| Pavendar Bharathidasan Institute of Information technology   | Principal           | 11-05-2016 to 27-06-2016 | 1 months              |
| Annai mathammal Sheela Engineering College                   | Principal           | 29-06-2016 to Til Date   |                       |

b. Research: Nil

c. Industry: 1 Years and 10 Months

5. Area of specializations : Electrical Engineering

6. Subjects teaching at

Under graduate level : Power Quality, Biomedical instrumentation

7. Research guidance :

|  |   |
|--|---|
| No. of papers published in Conferences | 6 |
| Journals                               | 8 |

8. Research publication : 3

**National and International Journal**

1. Published a paper titled “Harmonic elimination of Inverters using Blind Signal Separation ” in ICSICT 2004 conference, Peking University, Beijing, China.
2. Presented and Published a paper titled “Harmonic elimination by Shunt Active filter using PI controller” in 2010 IEEE International Conference on Computational Intelligence and Computing Research.
3. Published a paper titled “Analysis of Reference Current extraction for APF using PSO and ACO based on THD” in International journal of Advanced Technology and Engineering Research ,Vol.2,Issue :2,May 2012,pp- 16-22
4. Published a paper titled “Analysis of Harmonic minimization on shunt Active filter using Evolutionary Programming Techniques” in Archives Des Sciences Vol.66,Issue :2, Feb 2013, pp- 19-30.
5. Published a paper titled “A Novel Dissociated Current Control Technique for harmonic minimization in non linear loads” in International Review on Modeling and Simulations ISSN 1974-9821 Vol 7.No 1, pp 125-131, February 2014
6. Published a paper titled, “PSO and GA based Performance Optimization of PI controller in Three phase Shunt Hybrid Filter” in International Journal of Engineering Research and Technology ISSN 2278-0181 ,Vol 3,No 8,pp 255-260, August 2014.

Book Published : 2

Awards : Nil

## VIII. Fee

Details of fee, as approved by State Fee Committee, for the Institution

| Sl.No | Category                             | CET Quota                        |                                  | Management Quota                 |                                    |
|-------|--------------------------------------|----------------------------------|----------------------------------|----------------------------------|------------------------------------|
|       |                                      | Fixed by the State fee committee | Being charged by the Institution | Fixed by the State fee committee | Fixed by the State fee Institution |
| 1.    | Admission                            | -                                | -                                | -                                | -                                  |
| 2.    | Tuition Fee                          | 50000                            | 50000                            | 85000                            | 85000                              |
| 3.    | University Fee (Examination fee etc) | -                                | -                                | -                                | -                                  |
| 4.    | Hostel fee                           | -                                | 35000                            | -                                | 35000                              |
| 5.    | Laboratory fee                       | -                                | -                                | -                                | -                                  |
| 6.    | Library fee                          | -                                | -                                | -                                | -                                  |
| 7.    | Any other                            | -                                | -                                | -                                | -                                  |
| Total |                                      | 50000                            | 85000                            | 85000                            | 120000                             |

- ❖ Time schedule for payment of fee for the entire programme.  
One month after the reopening of the college in each year of the programme.
- ❖ No. of Fee waivers granted with amount and name of students.  
- Nil
- ❖ Number of scholarship offered by the institute, duration and amount  
- Nil
- ❖ Criteria for fee waivers/scholarship.  
- Nil



## ADMISSION

❖ Number of seats sanctioned with the year of approval for the academic year 2019-2020.

| Sl. No | Courses  | No. of Seats | Year |
|--------|--|--------------|------|
| 1      | B.E - Computer Science And Engineering           | 60           | 1996 |
| 2      | B.E - Electronics And Communications Engineering | 60           | 1996 |
| 3      | B.E - Mechanical Engineering                     | 60           | 2004 |
| 4      | B.E - Medical Electronics                        | 60           | 2019 |
| 5      | B.E - Industrial Engineering                     | 60           | 2019 |
| 6      | MCA- Computer Applications                       | 23           | 2005 |
| 7      | MBA- Business Administration                     | 45           | 2005 |
| 8      | M.E - Computer Science And Engineering           | 18           | 2005 |
| 9      | M.E - Power Electronics And Drives               | 13           | 2005 |
| 10     | M.E - Applied Electronics                        | 13           | 2008 |
| 11     | M.E - Embedded System Technologies               | 13           | 2010 |
| 12     | M.E - CAD CAM                                    | 13           | 2010 |
| 13     | M.E - Industrial Safety & Engineering            | 13           | 2012 |
| 14     | M.E - Structural Engineering                     | 18           | 2013 |

- 65% of seats filled through single window system by Anna University Chennai.
- 35% of seats filled through CET conducted by consortium of self financing Professional Arts and Science Colleges Tamil Nadu.

### X. ADMISSION PROCEDURE

- ❖ Mention the admission test being followed, name and address of the Test Agency and its URL (website).
- Government Quota Seats URL – [www.annauniv.edu](http://www.annauniv.edu)
- Consortium of Self – Financing Professional, Arts and Science Colleges in Tamil Nadu.

Number of seats allotted to different Test Qualified candidates separately [AIMCET/CET (State conducted test/University tests)/Association conducted test]

- 65 % of seats filled through single window system by Anna University.
- 35 % of seats filled through CET conducted by consortium of self financing Professional Arts and Science Colleges Tamil Nadu.
- ❖ Calendar for admission against management/vacant seats: Last date for request for applications.

Second week of July

Last date for submission of application.

Fourth week of July Dates for announcing final results.

As decided by Anna University and Consortium of Self

Financing Professional, Arts and Science Colleges in Tamil Nadu.

Release of admission list (main list and waiting list should be announced on the same day)

As decided by Anna University and Consortium of Self

Financing Professional, Arts and Science Colleges, Tamil Nadu.

Date for acceptance by the candidate (time given should in no case be less than 15 days)

As decided by Anna University and Consortium of Self Financing

Professional, Arts and Science Colleges in Tamil Nadu.

Last date for closing of admission.

As decided by State Government and Anna University

Starting of the Academic session.

As prescribed by Anna University

### I Year

Commencing Date – August

Last Working Date – May

The waiting list should be activated only on the expiry of date of main list.

List is maintained by Anna University and Consortium of Self Financing Professional, Arts and Science Colleges in Tamil Nadu.